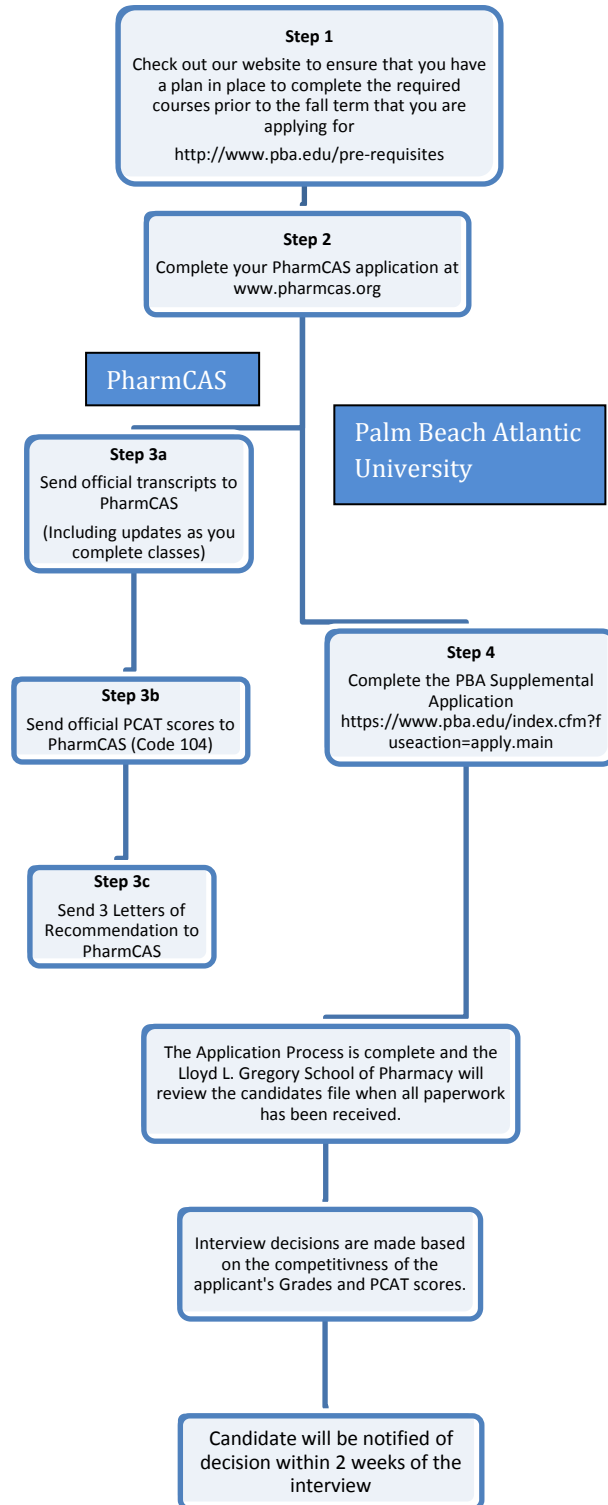


Pharmacy Application Process Diagram

Lloyd L. Gregory School of Pharmacy



The following Step Are Required To Apply:

1. Check out Palm Beach Atlantic’s Lloyd L. Gregory School of Pharmacy website to ensure that you will have meet all of the requirements to begin our program at: <http://www.pba.edu/pharmacy-admissions> (Any exceptions to explicit admissions criteria will be made on a case by case basis. It will be up to an admissions committee to make any such decisions.)
2. Apply online using PharmCAS (Pharmacy College Application Service) at www.pharmcas.org. The PharmCAS application deadline is March 1st.
3. Send all of the necessary application documents directly to PharmCAS for verification. This should include: transcripts, PCAT scores, and Letters of Recommendation. (Note: You do not need all of these documents prior to starting your application)
4. Complete the Palm Beach Atlantic University’s Supplemental Application online at: <https://www.pba.edu/index.cfm?fuseaction=apply.main>
Select the link in step 4 on our home page titled PBA Supplemental Application to begin. **(We will only formally review applicants after they have completed these first four steps.)**
5. Once Steps 1 through 4 have been completed, and all the documents have been received, the Admissions Committee will review candidate files for campus interviews. The Gregory School of Pharmacy at Palm Beach Atlantic University is a competitive program; therefore we are not able to grant interviews to every applicant. We limit enrollment to approximately 75 students each academic year.
6. After campus interviews have been conducted, the Admissions Committee will again review the applicants to make a decision on their candidacy.
7. After an offer of acceptance is received, the candidate has two (2) weeks to formally accept this offer by submitting a deposit of \$750 to Pharmacy Admissions, there is an additional Registration Fee of \$1,250 that is due by May 1st, and a final \$250 deposit due by July 15th. Candidates who receive an offer of acceptance after July 15th, a payment of \$2,250 is due within two weeks of receiving the offer.